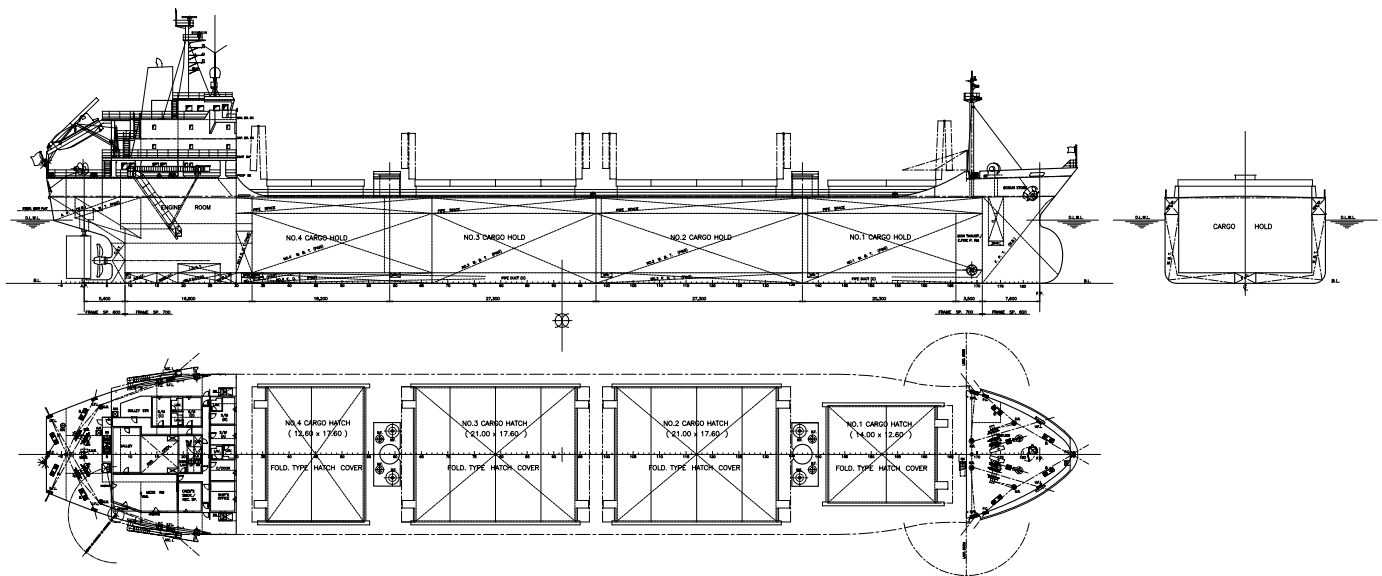


DW 13.600 MT TYPE GENERAL CARGO SHIP / KYOKUYO SHIPYARD
PROJECT No. A-5768

Jan./2003

SHIP TYPE	General cargo ship
MAIN DIMENSION	Length over all abt. 136.40 m Length betw. perp. 126.40 m Breadth mld. 21.20 m Depth mld. 11.30 m Designed draft mld. 8.35 m
DEADWEIGHT	abt. 13,600 MT at d = 8.35 m
COMPLEMENT	16 persons
KIND OF CARGO	Bulky cargo (Grain, Coal, etc.) Steel coil, Dangerous goods (SOLAS / BC Code)
CAPACITY.	Grain 17,300m ³ Bale 16,960m ³
SERVICE SPEED	abt. 13.3 knots at d = 8.35 m & C.S.O. with 15% sea margin
MAIN ENGINE	1 -Wartsila 6L38B M.C.O. 4,350kW × 600rpm C.S.O. 3,915kW × 600rpm



Kyokuyo Shipyard Corporation
8-7, Minatomachi, Chofu, Shimonoseki-city 752-0953, Japan
Phone +81-832-461291 Fax +81-832-454130

